

STEEL CYLINDERS

CLP Series – Pancake Locknut



Capacity Range▶ 60 - 500 tons
 Stroke Range▶ 1.77 - 1.97 in.
 Maximum Pressure▶ 10,000 psi

- ▶ Extra low profile to fit into tight spaces.
- ▶ 5° swivel load caps on all models.
- ▶ Locknut design provides positive mechanical load hold.
- ▶ Single acting load return with overload protection port.
- ▶ Carrying handles and eye bolts on all models.

CLP-1002 Shown



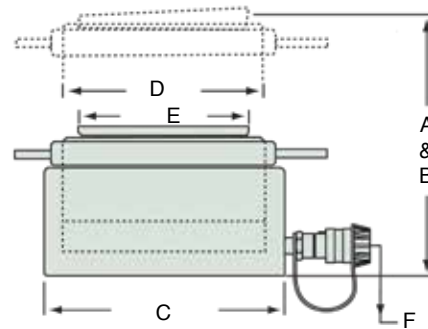
POWER PUMPS - pages 43 - 65
 Simplex offers a wide variety of lightweight power pumps to fit any application.



HOSES - pages 78 - 79
 Heavy duty and thermo plastic hydraulic hoses to meet your requirements and safety factor.

Cylinders

Simplex CLP Series cylinders are designed specifically for lifting and load holding where space is at a minimum. ▼



Model	Capacity Tons	Stroke (in)	Oil Capacity Required (cu.in.)	Ram Bore Diameter (in)	Effective Area (sq.in.)	Pressure @ Capacity (psi)	A	B	C	D	E	F	Wgt. (lbs)
							Minimum Height (in)	Extended Height (in)	Body O.D. (in)	Piston O.D. Thread (mm)	Saddle Diameter (in)	Base to Port (in)	
CLP-602	60	1.97	26.4	4.1	13.4	8955	4.9	6.7	5.5	105 X 6	3.8	.8	33
CLP-1002	100	1.97	43.7	5.3	22.2	9009	5.4	7.2	6.9	135 X 6	5	.8	57
CLP-1502	150	1.77	58.7	6.5	33.1	9063	5.8	7.8	8.7	165 X 6	5.9	1.1	97
CLP-2002	200	1.77	77.8	7.5	49.9	8016	6.1	8.1	9.6	190 X 6	7.1	1.2	125
CLP-2502	250	1.77	99.7	8.5	56.3	8881	6.3	8.3	10.8	215 X 6	7.9	1.3	165
CLP-4002	400	1.77	157.1	10.6	88.7	9019	7	9	13.8	270 X 8	9.9	1.5	297
CLP-5002	500	1.77	194	11.8	109.6	9124	7.6	9.6	15.8	300 X 8	11.2	1.9	418